

ICOOL TOUCH SCREEN MEMORY BATTERY REPLACEMENT AND RE-SETTING SYSTEM CLOCK RESET



Tools required:

- Philips Small/Hobby Screw Driver
- Flat Screw Driver
- RESET Card
- CR1220 Battery
- 3mm Allen Key
- Stylis or Sharp Pencil



STEP 1:

Remove Touch Screen from iCool Unit.



STEP 2:

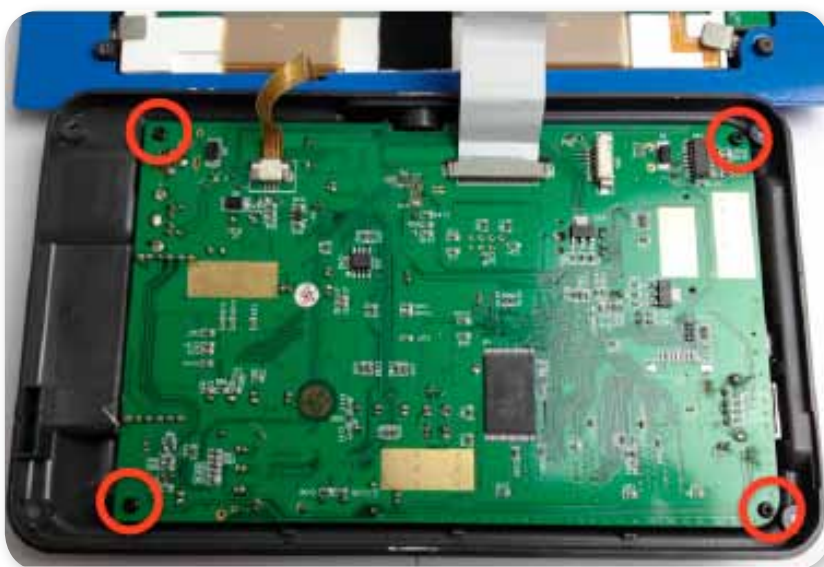
Turn Screen Over & remove 4 philips head screws as indicated.



STEP 3:

Carefully lift back off & place next to unit as shown.

Do not remove the cables.



STEP 4:

Remove 4 philips head screws as indicated.



STEP 5:

Insert a flat blade screw driver between the case and PCB as shown. Gently use the screwdriver to push the circuit board to the right and it will pop up.



Circuit board connectors are clear of the Case.



STEP 6:

Gently lift up circuit board and unplug speaker cable as shown.



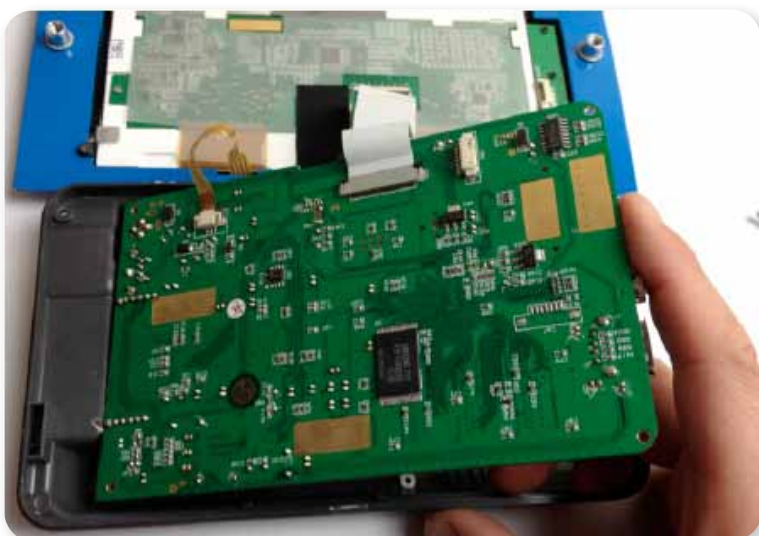
STEP 7:

Once the speaker cable is disconnected flip the circuit board over and rest on the screen. Remove battery and replace with new Battery LR 1220.



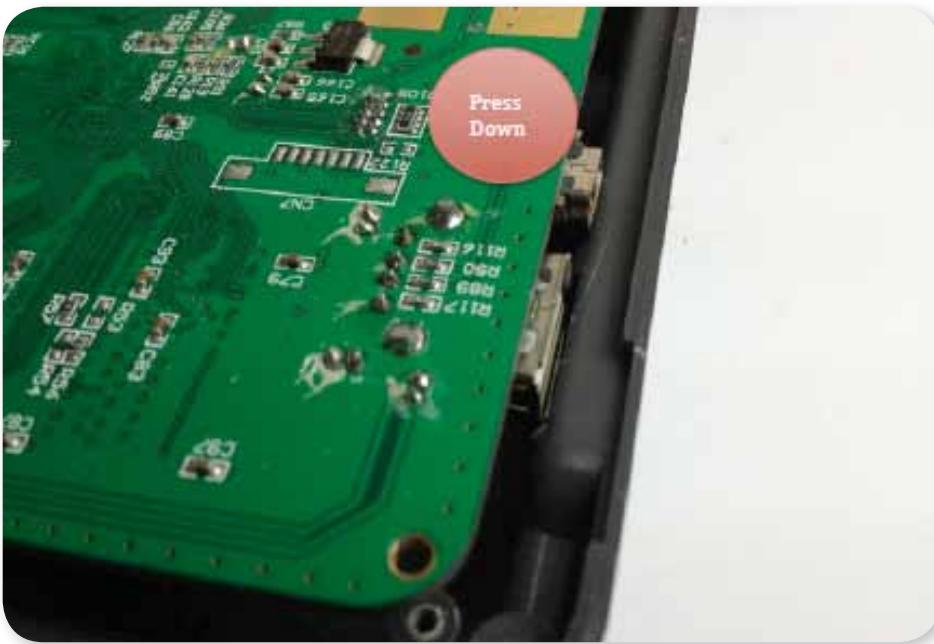
STEP 8:

Flip the circuit board back over and plug speaker cable back in.



STEP 9:

Lift circuit board and slide connectors into holes on left hand side of case as shown.



STEP 10:

Press Down on the circuit board where shown and the connectors will click in.



STEP 11:

Replace the 4 philips screws on the circuit board as indicated.



STEP 12:

Flip the back cover over and align the screw holes with the front. Ensure that the cables are inside the screen, if they are sticking out gently open the unit and push back in.



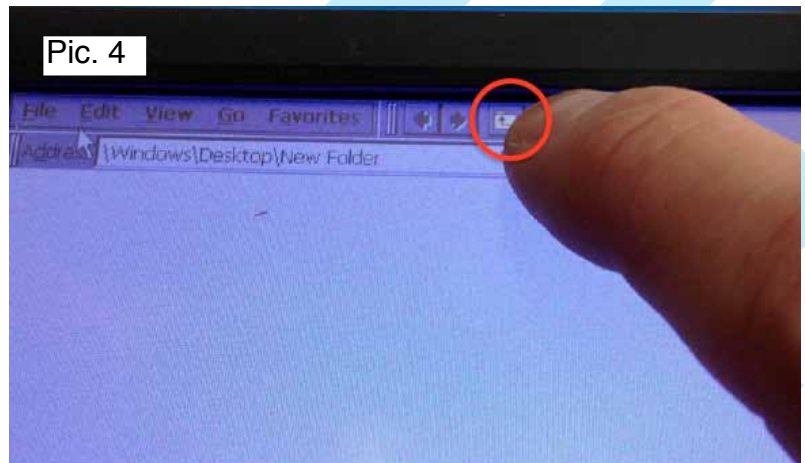
STEP 12:

Replace the 4 philips screws on the Screen.

NOW THAT YOU HAVE REPLACED THE BATTERY, YOU WILL NEED TO RESET THE SCREENS CLOCK BEFORE YOUR ICOOL WILL FUNCTION.

REFER TO 'INSTRUCTIONS FOR SETTING THE CLOCK' ON PAGE 7 AND 8

Now press the back icon (circled in red in Pic 4) using your finger or a stylus Tap it three times until you see the main menu: (Pic 5)



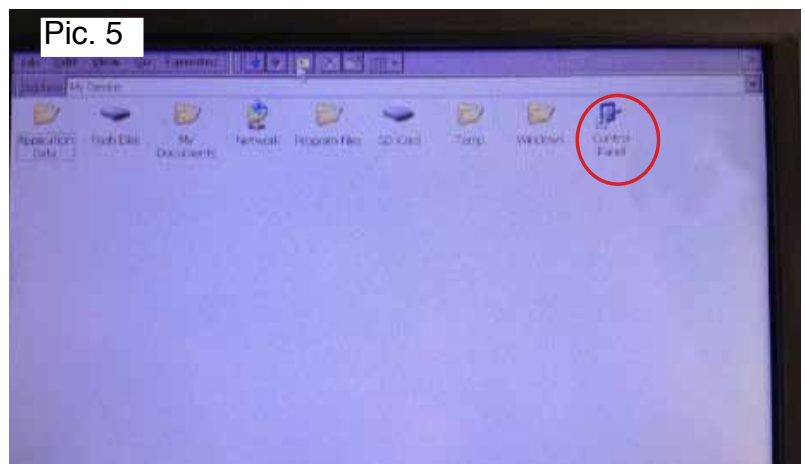
Step 5

Double Click on the "Control Panel" icon and then the "Date & Time". (Pic 5)

Step 6

Click on the Year and press and hold the Down arrow, it will adjust the year (holding will auto scroll the year)

You can also use the pop up keyboard that is available from the bottom right hand of the screen.



SET THE DATE TO CURRENT YEAR and click APPLY. (Pic 6)

Set the MONTH and click APPLY

There is no need to set the exact day or time of day, it is the year that must be correct for the iCool software to work correctly

Step 7

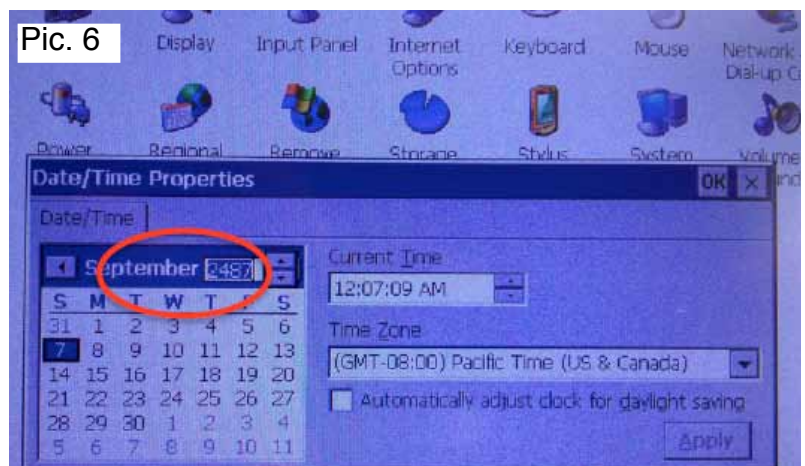
Remove the temporary SD card

Step 8

Replace the original SD Card into screen

Step 9

Turn on the iCool unit and normal operation should resume.



If you need further assistance please contact us at iCool, we will be pleased to assist you. Contact details are on our website.