

Preliminary Installation Information



External Dimensions

Length 1340 x Width 782 x Depth 1055 mm

Internal Dimensions

Length 1160mm x Width 712 x Depth 1000 mm

Empty Weight

75 Kg

Weight Filled with water

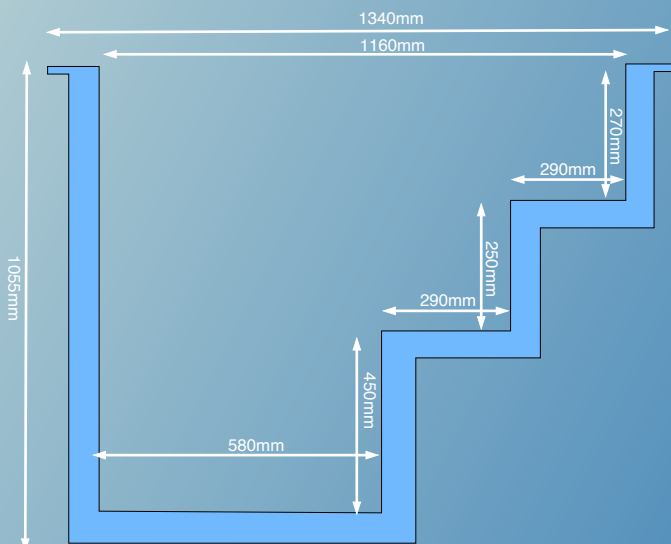
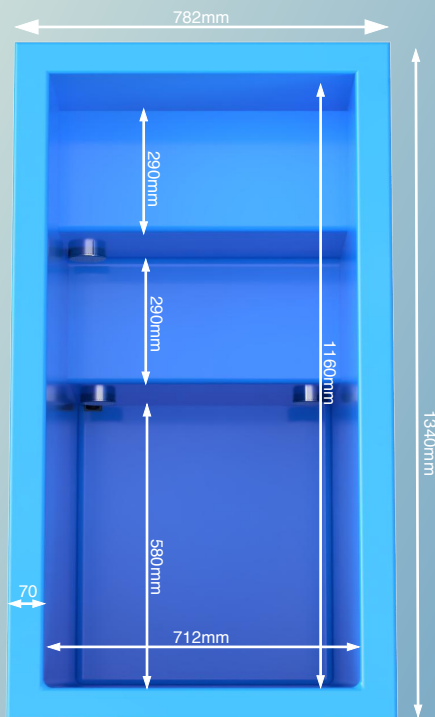
Approx. 470Kg

Water capacity

Approx. 385 Litres

MiPod MINI

Basic Pool Dimensions



External Dimensions

Length 1540 x Width 782 x Depth 1055 mm

Internal Dimensions

Length 1320 x Width 712 x Depth 1000 mm

Empty Weight

90 Kg

Weight Filled with water

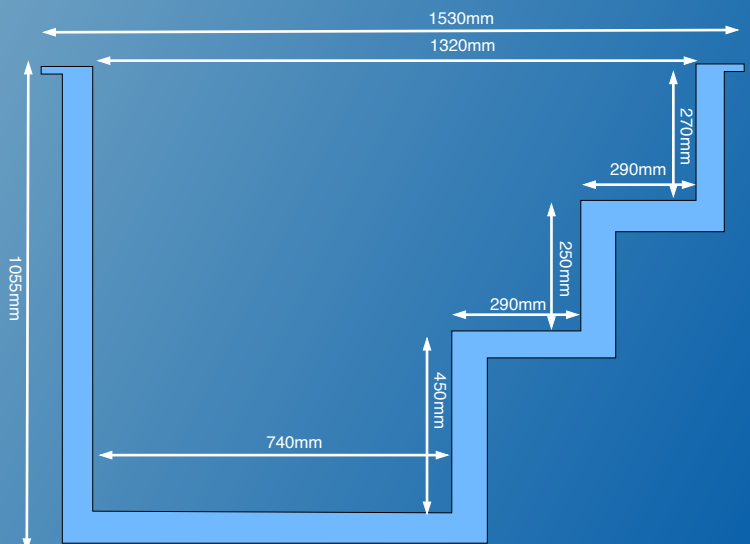
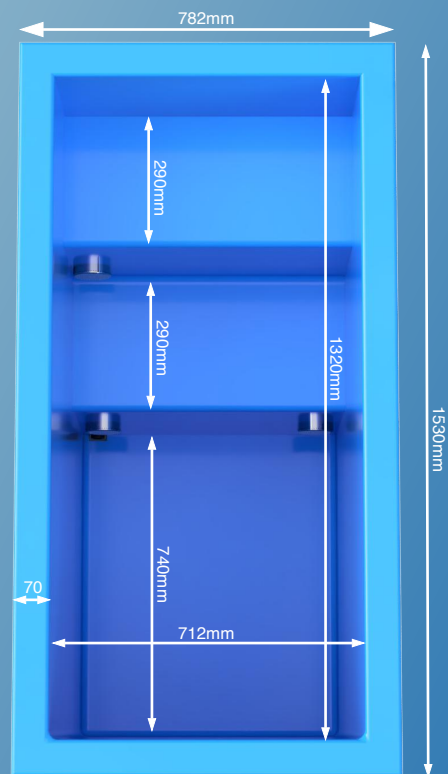
Approx. 650Kg

Water capacity

Approx. 520 Litres

MiPod Pro

Basic Pool Dimensions



Popular installation ideas for the MiPod PRO Chilled Range.

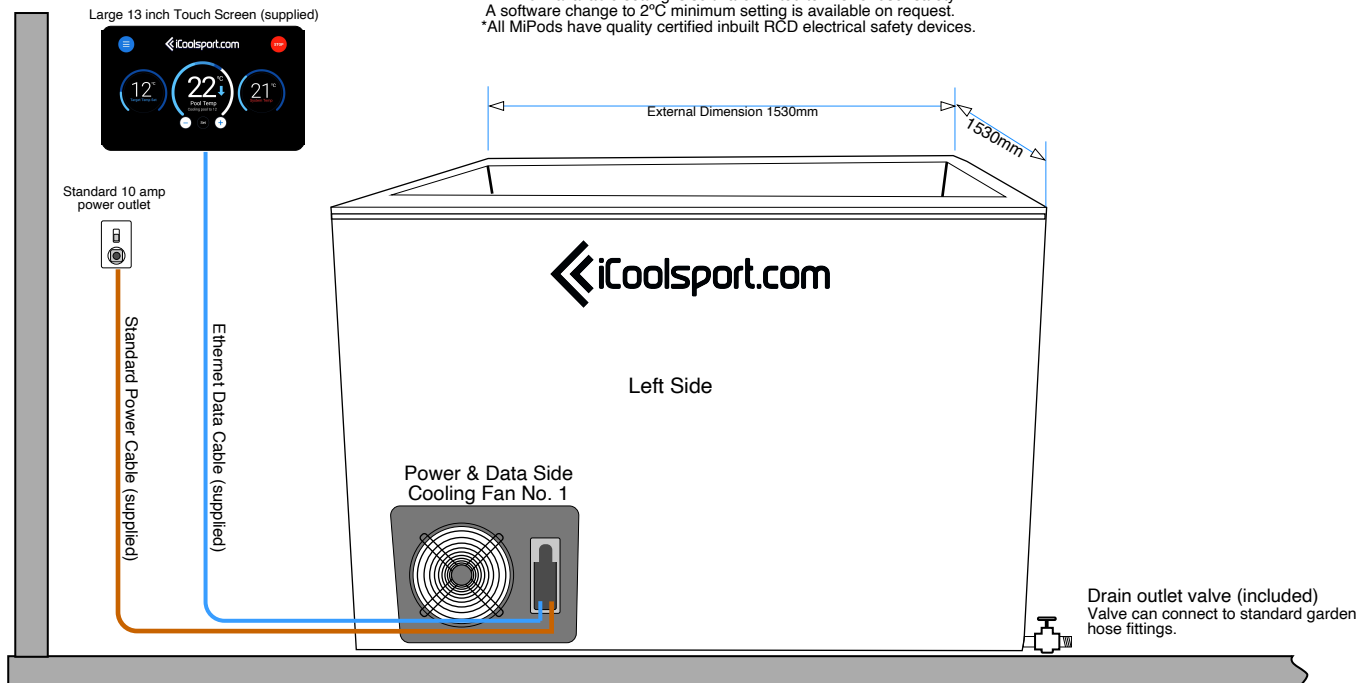
Suggestion 1: Fully Self Contained Stand Alone. Popular for private home use.

1

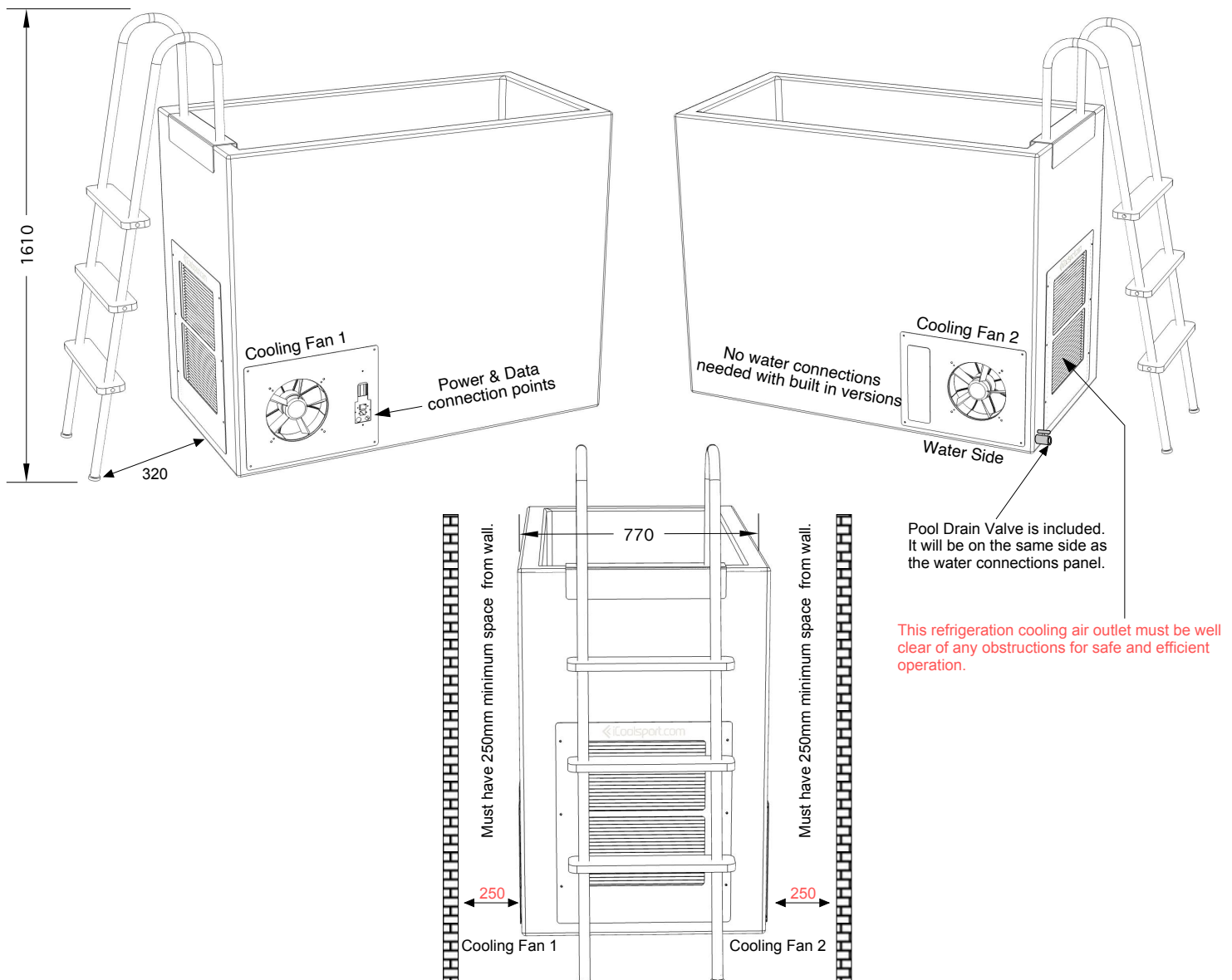
- * Powerful 5,400 watt quiet running internal chilling system installed inside the MiPod
- * Inbuilt water circulation pump.
- * Big 13 inch colour touch screen controller with wall mounting hardware.

Standard Safety Features

- * Minimum available setting is software limited to 4°C for user safety.
- * A software change to 2°C minimum setting is available on request.
- * All MiPods have quality certified inbuilt RCD electrical safety devices.



When placing your order you can request the Electrical/Electronics Panel to be on either side to suit your needs.



Popular installation ideas for the MiPod PRO Chilled Range.

2

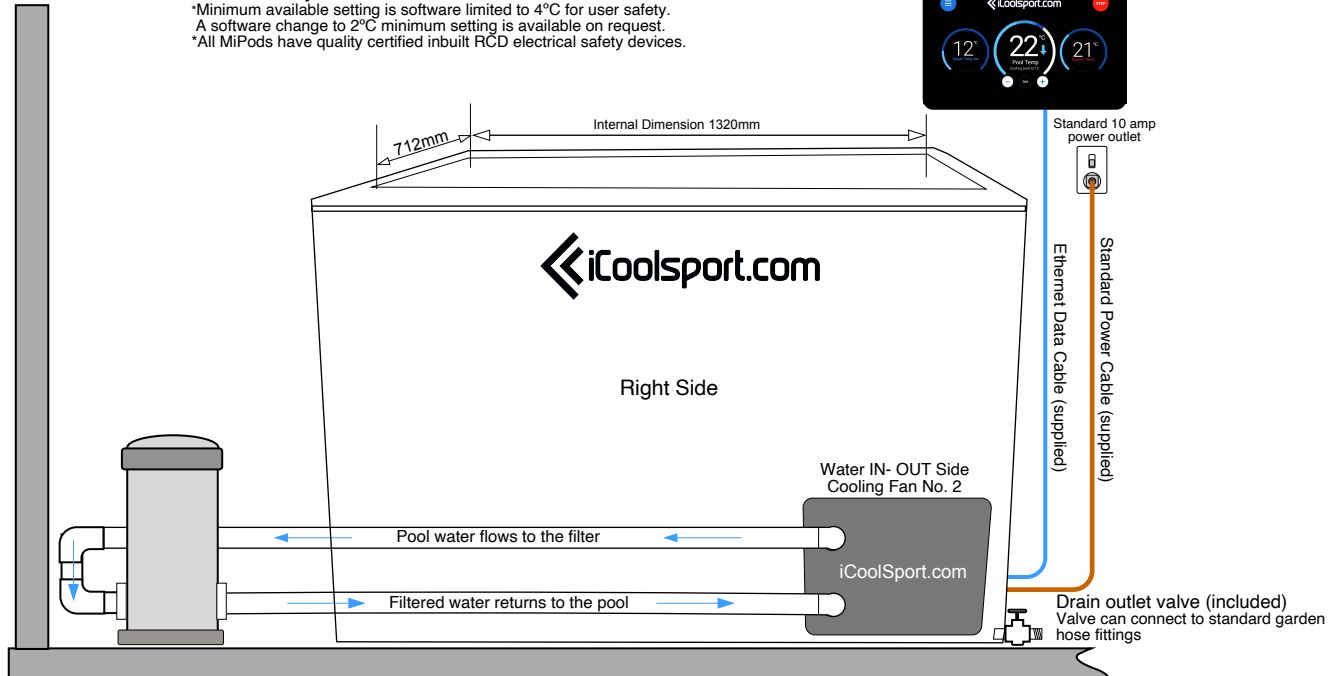
Suggestion 2: Easier cleaning for heavier use by multiple athletes.
Popular for more frequent home use, or ideal for small recovery centres and gyms.

- * Large commercial grade easy access filtration system added for heavier use.
- * Powerful 5,400 watt quiet running chilling system installed inside the MiPod
- * Inbuilt water circulation pump.
- * Big 13 inch colour touch screen controller with wall mounting hardware.

Standard Safety Features

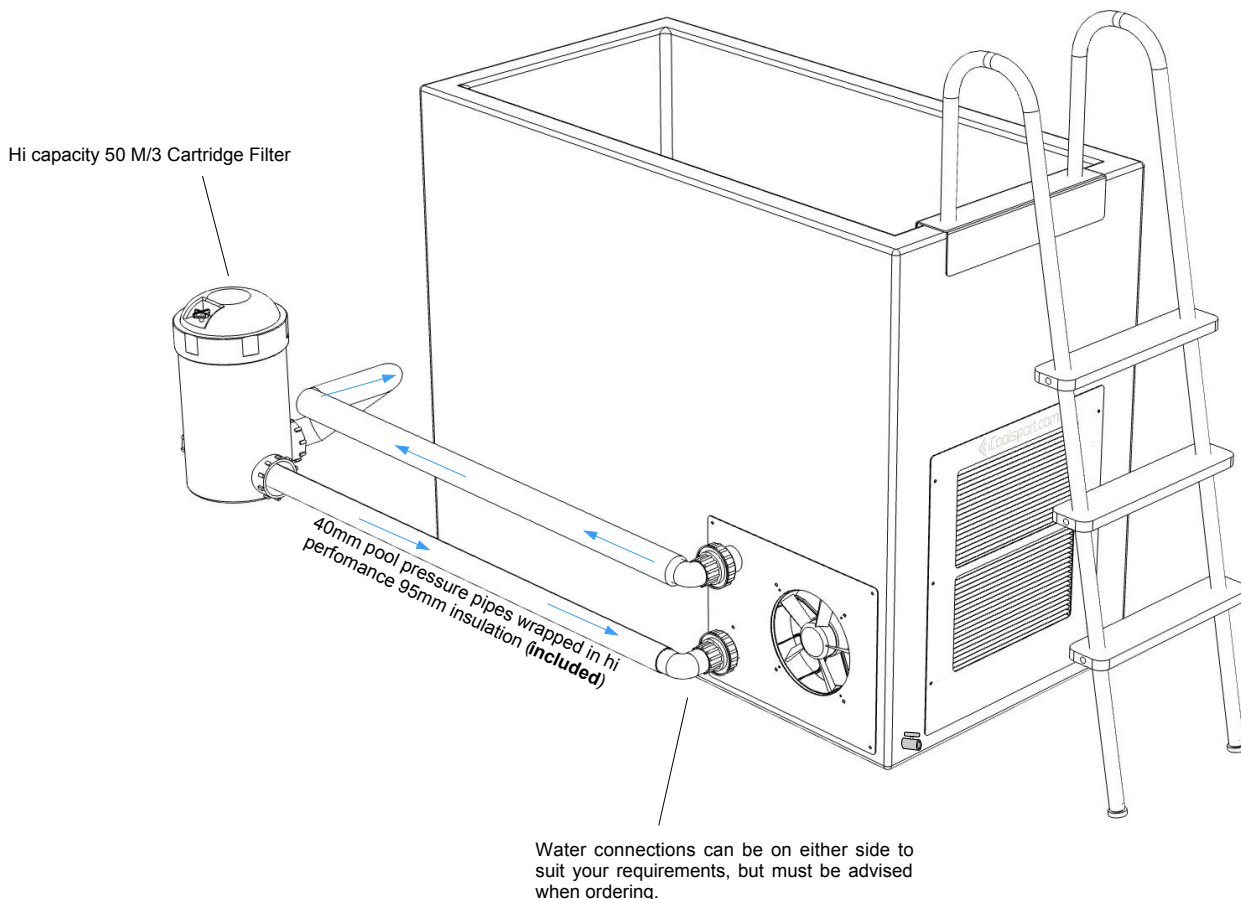
- *Minimum available setting is software limited to 4°C for user safety.
- * A software change to 2°C minimum setting is available on request.
- *All MiPods have quality certified inbuilt RCD electrical safety devices.

Large 13 inch Touch Screen (included)



Filter System can be mounted in any convenient place near the pool, or in an adjacent room or outdoor space within 15-20 meters maximum distance.

*Please advise if you require extra plumbing distance when ordering



Popular installation ideas for the MiPod PRO Chilled Range.

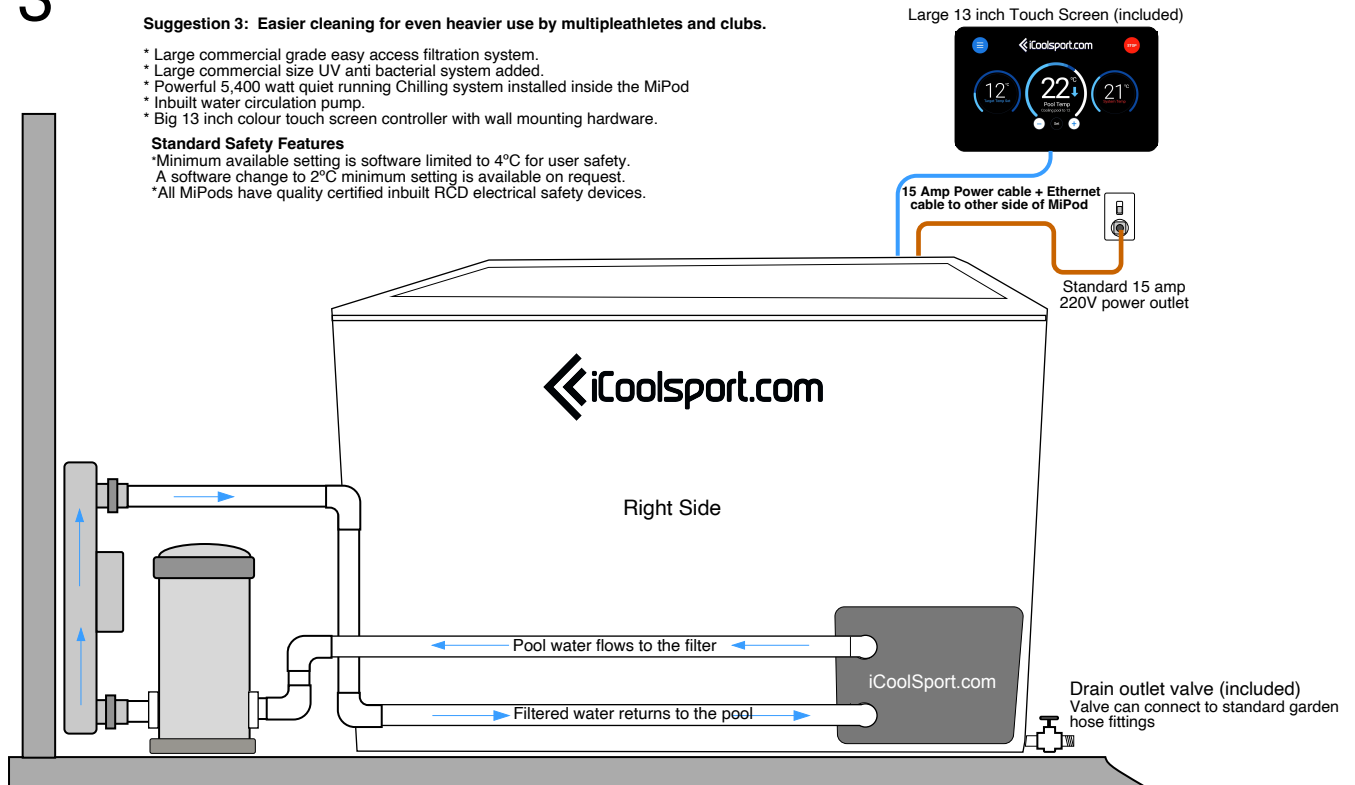
3

Suggestion 3: Easier cleaning for even heavier use by multiple athletes and clubs.

- * Large commercial grade easy access filtration system.
- * Large commercial size UV anti bacterial system added.
- * Powerful 5,400 watt quiet running Chilling system installed inside the MiPod
- * Inbuilt water circulation pump.
- * Big 13 inch colour touch screen controller with wall mounting hardware.

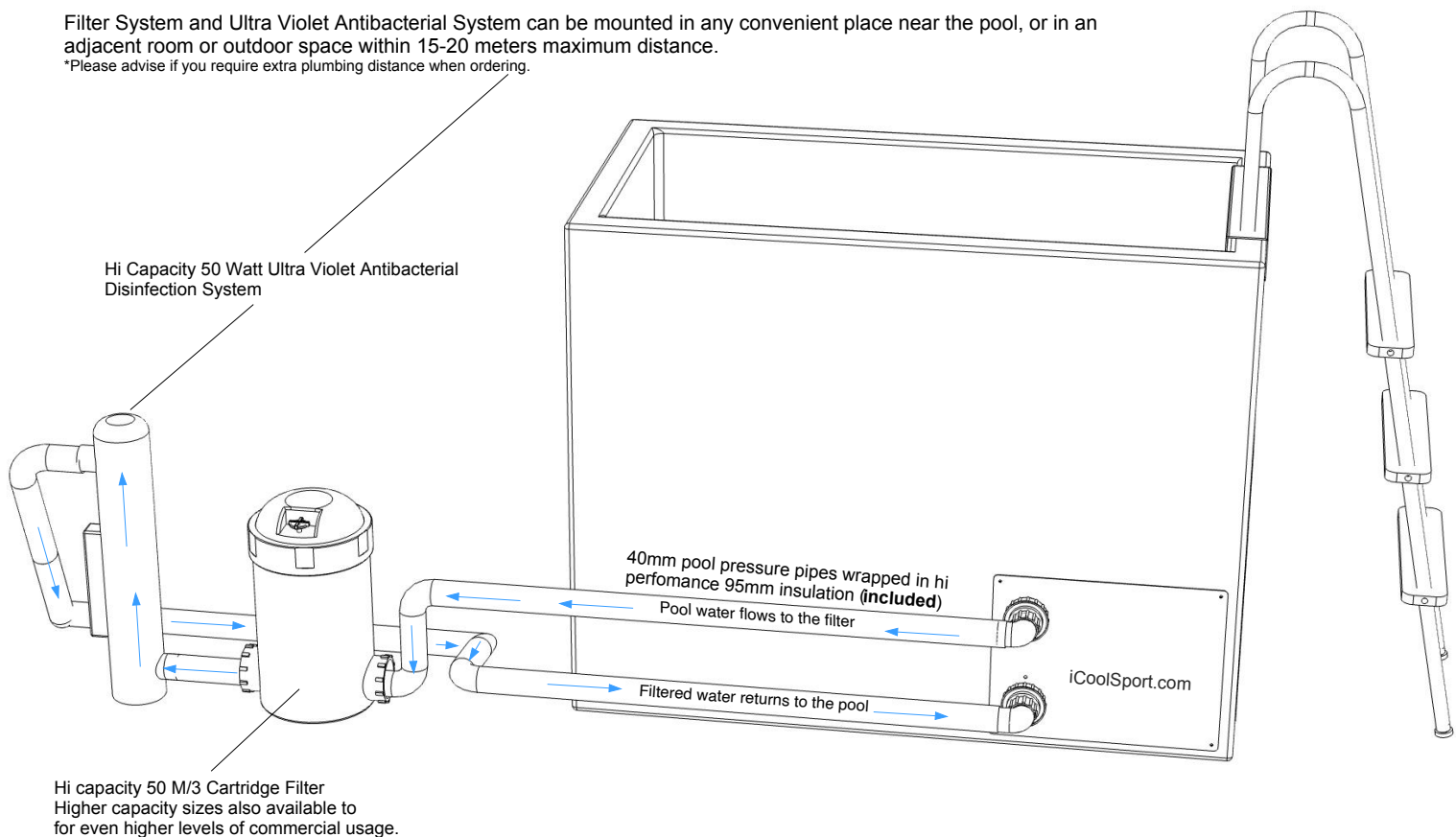
Standard Safety Features

- * Minimum available setting is software limited to 4°C for user safety.
- * A software change to 2°C minimum setting is available on request.
- * All MiPods have quality certified inbuilt RCD electrical safety devices.



Filter System and Ultra Violet Antibacterial System can be mounted in any convenient place near the pool, or in an adjacent room or outdoor space within 15-20 meters maximum distance.

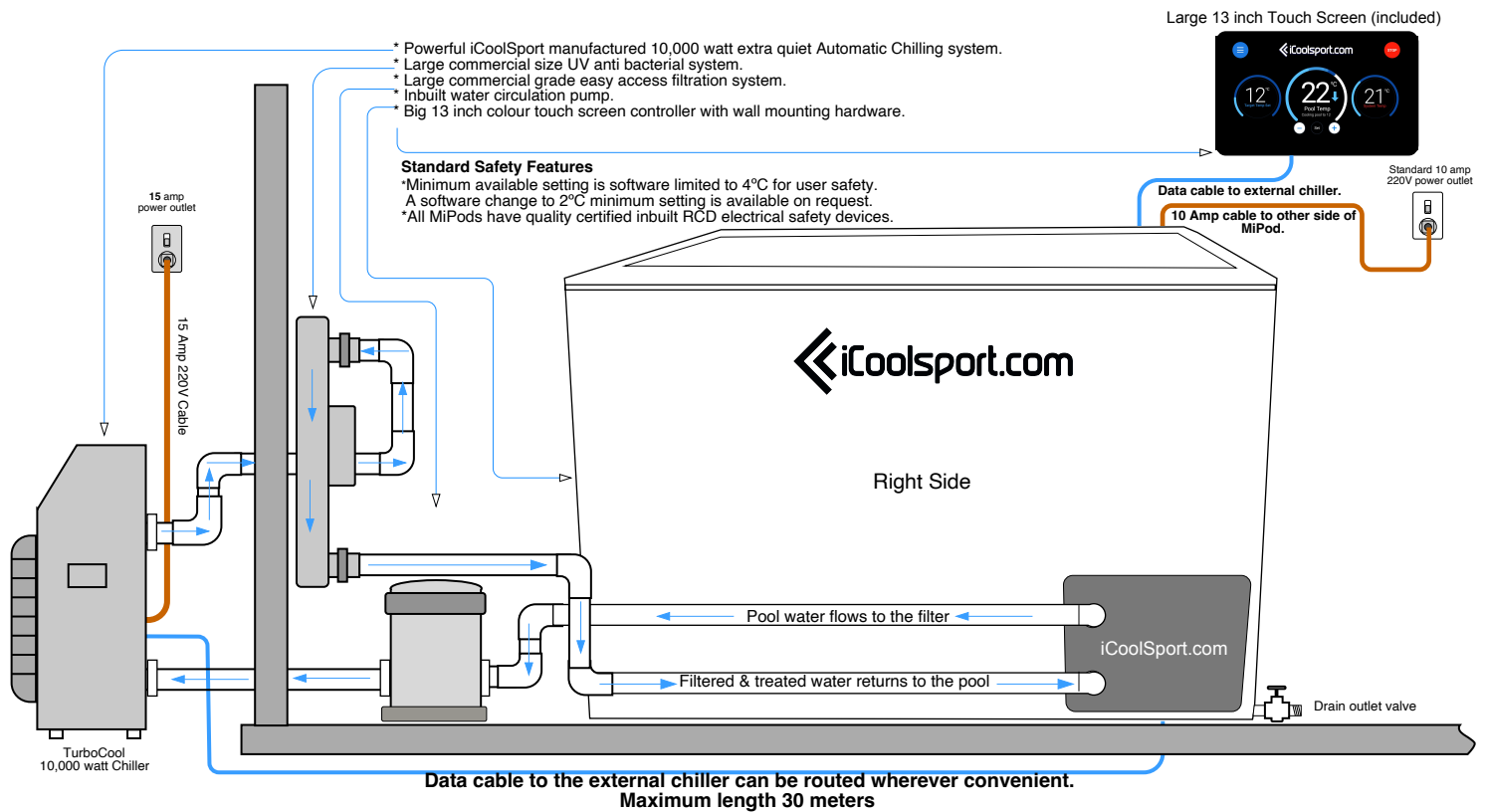
*Please advise if you require extra plumbing distance when ordering.



Popular installation ideas for the MiPod PRO Chilled Range.

4

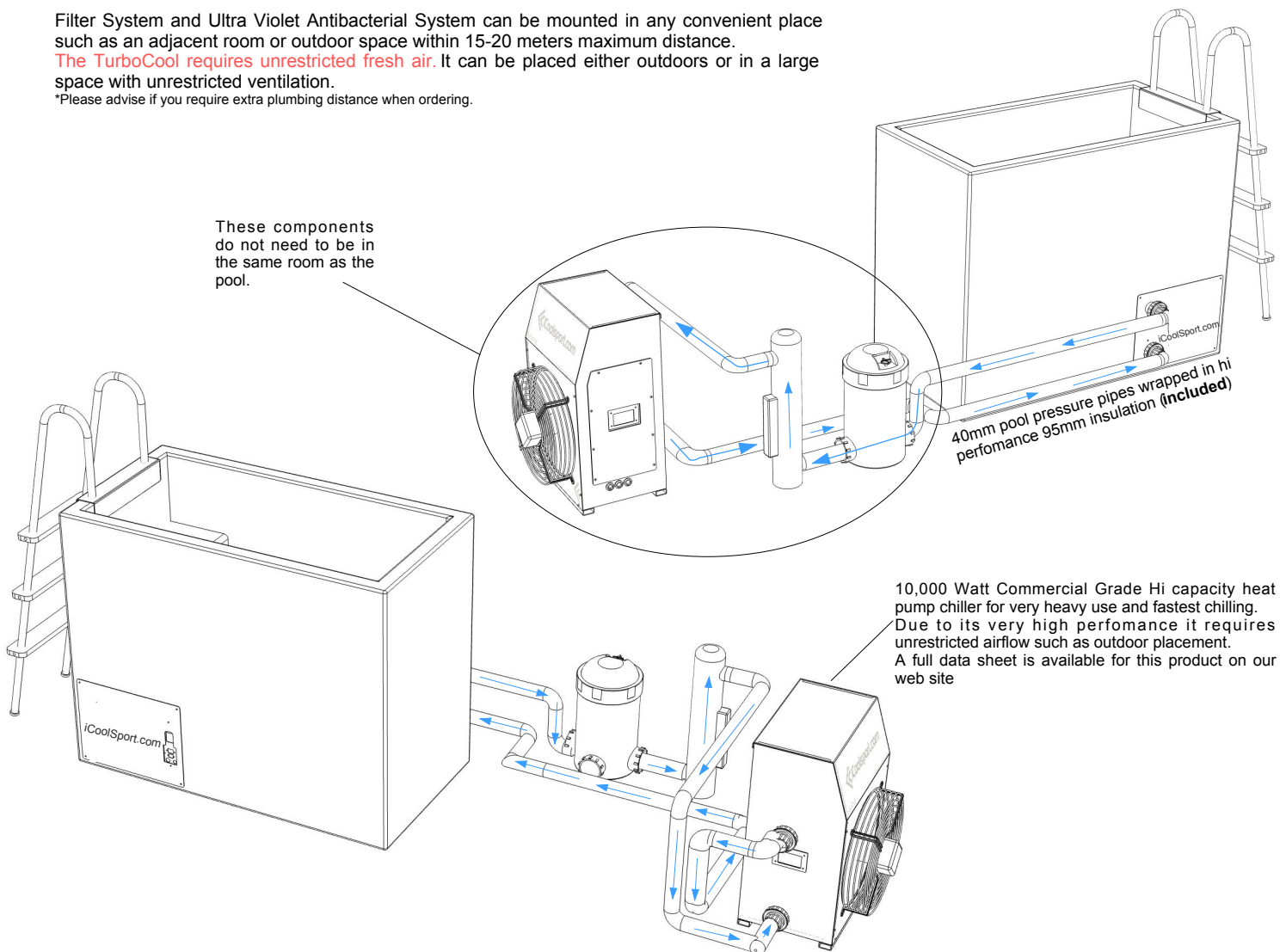
Suggestion 4: Ultimate commercial version for Recovery Centres. Heavy usage by multiple athletes permitted.



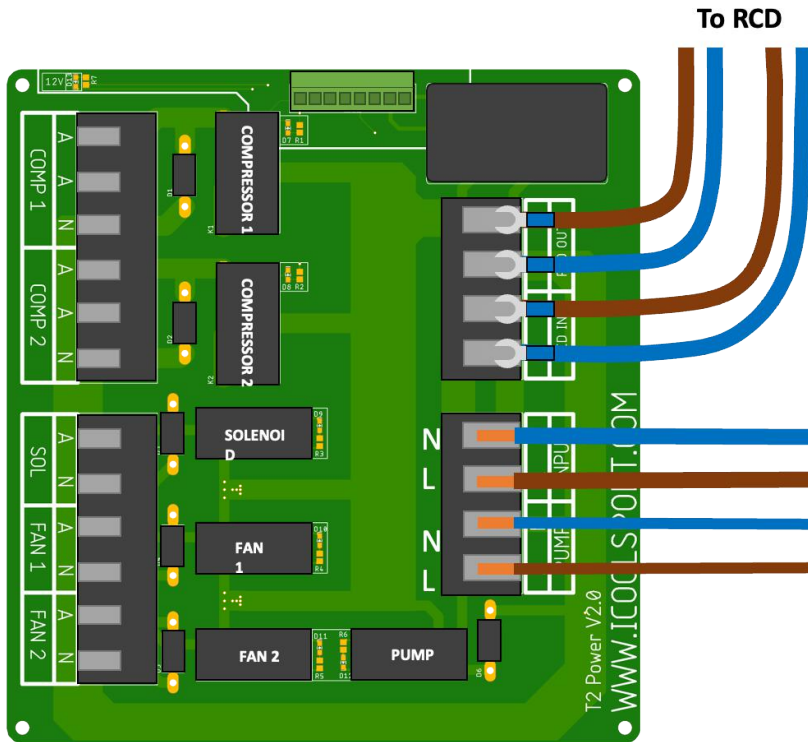
Filter System and Ultra Violet Antibacterial System can be mounted in any convenient place such as an adjacent room or outdoor space within 15-20 meters maximum distance.

The TurboCool requires unrestricted fresh air. It can be placed either outdoors or in a large space with unrestricted ventilation.

*Please advise if you require extra plumbing distance when ordering.



Turbo Wiring Diagrams



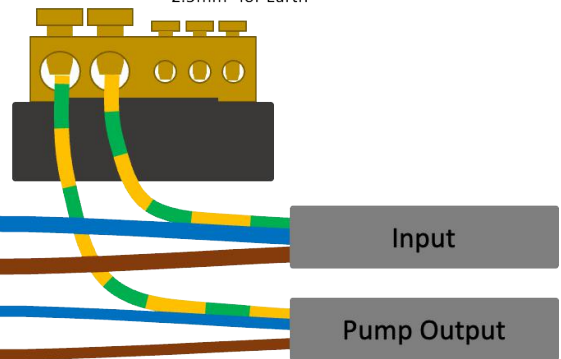
Power Requirements:

Turbo Input:

220-240V 50/60Hz Single Phase
Minimum 6mm² wire for Active and Neutral,
2.5mm² for Earth

Turbo Mini Input:

220-240V 50/60Hz Single Phase
Minimum 4mm² wire for Active and Neutral,
2.5mm² for Earth



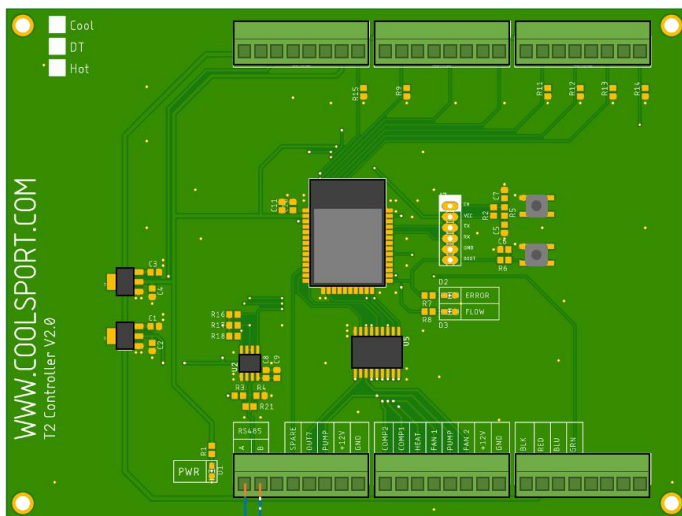
Pump Output

220-240V 50/60Hz relay output

Nominal Output current is 1.6A for Davey QB035-AMP.
Maximum output current is 10A.

Please note that main supply wire will need to be a larger gauge to account for the full 10A.

Note: All values based on AS3008 and unit operating with a DAVEY QB035-AMP



RS485 Data Cable Wiring

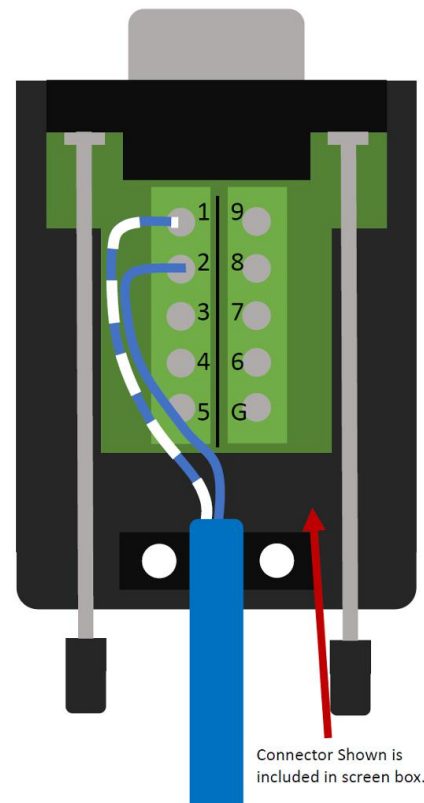
Must use a twisted pair cable.

Cable is terminated at the screen with a DB9 Connector.

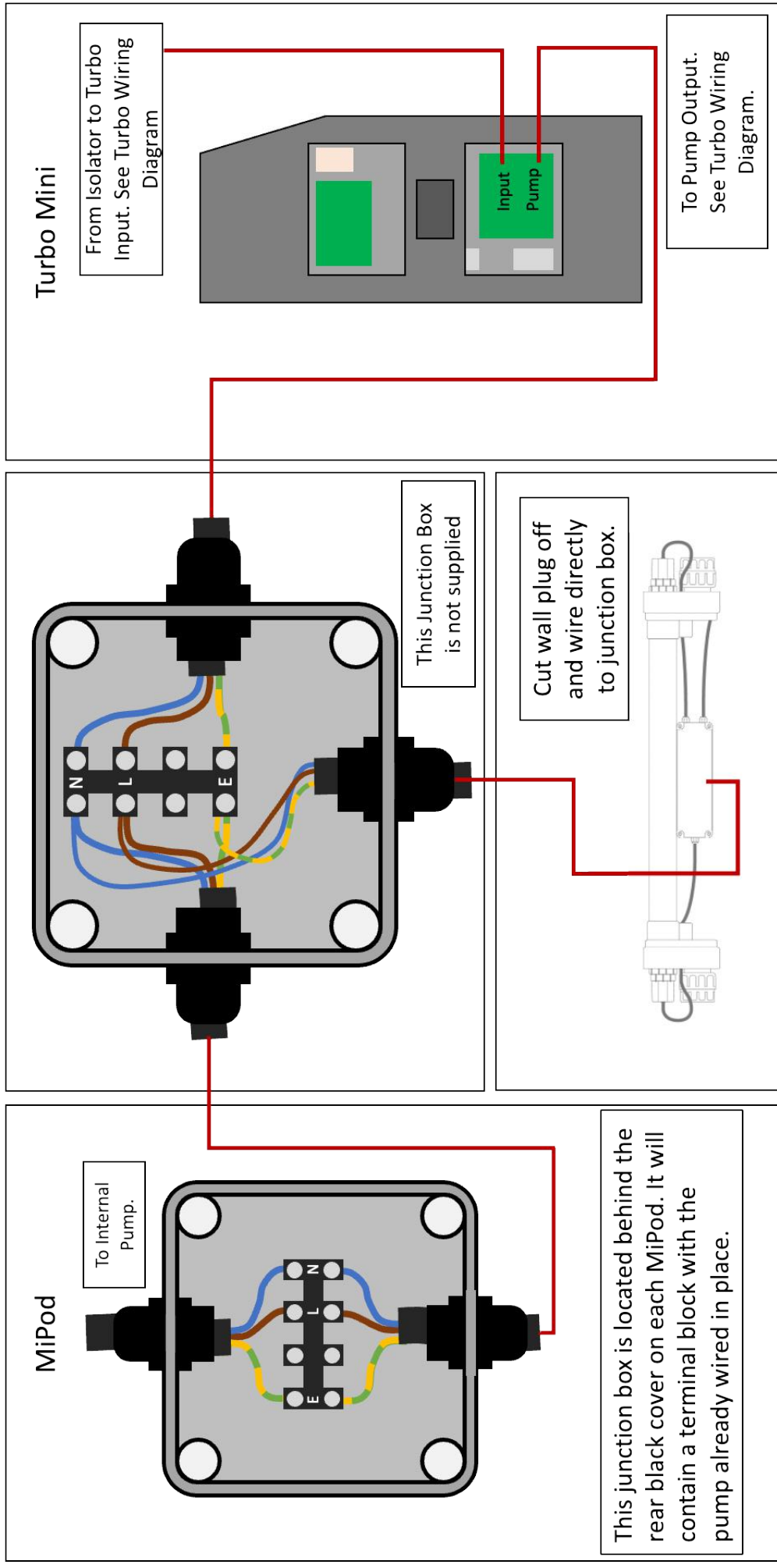
Supplied cable is Cat 5E and typical wiring uses the blue and blue/white pair.

A: Blue

B: Blue/White



Turbo Mini/MiPod Wiring Diagram



Note: If a UV is not installed in this setup, the middle junction box is not required.

Turbo Mini and MiPod Plumbing Diagram

